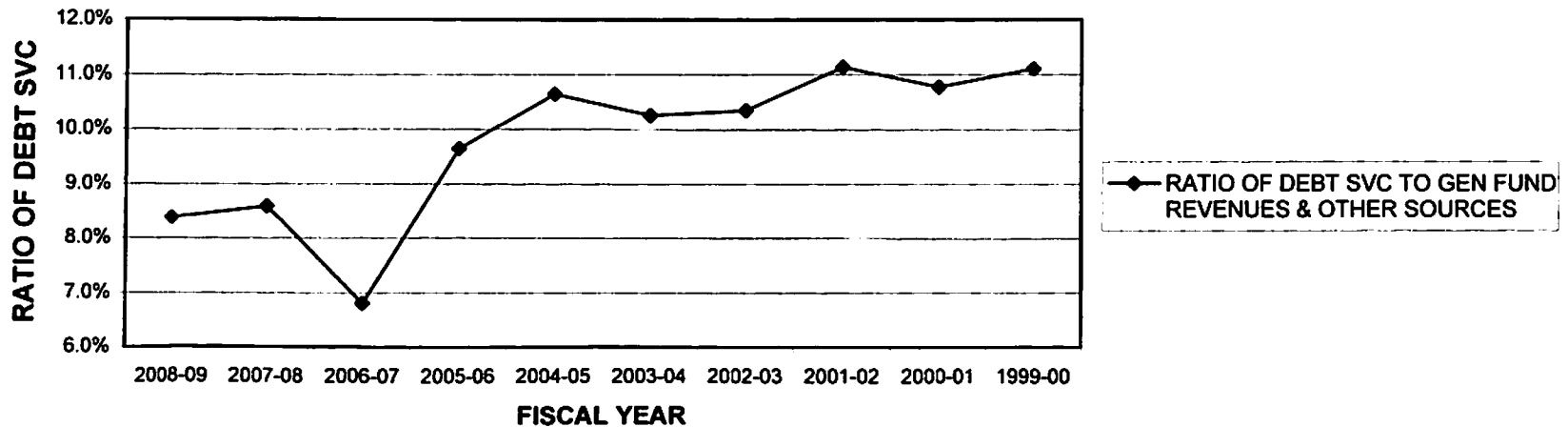


**SOLANCO SCHOOL DISTRICT**  
**RATIO OF ANNUAL DEBT SERVICE FOR GENERAL OBLIGATION BONDED DEBT TO**  
**TOTAL GENERAL FUND REVENUES AND OTHER FINANCING SOURCES**

<u>FISCAL YEAR</u>	<u>PRINCIPAL</u>	<u>INTEREST AND FISCAL CHARGES</u>	<u>TOTAL BONDED DEBT SERVICE</u>	<u>GENERAL FUND REVENUES &amp; OTHER FIN SRCS</u>	<u>RATIO OF DEBT SVC TO GENERAL FUND REVENUES &amp; OTHER FIN SRCS</u>
2008-2009	\$ 2,740,000	\$ 810,418	\$ 3,550,418	\$ 42,337,781	8.39%
2007-2008	2,610,000	1,009,356	3,619,356	42,099,679	8.60%
2006-2007	1,570,000	1,108,881	2,678,881	39,343,291	6.81%
2005-2006	2,435,000	1,173,835	3,608,835	37,423,091	9.64%
2004-2005	2,375,000	1,298,398	3,673,398	34,507,636	10.65%
2003-2004	2,210,000	1,358,778	3,568,778	34,781,479	10.26%
2002-2003	1,585,000	1,708,399	3,293,399	31,825,066	10.35%
2001-2002	1,925,000	1,556,959	3,481,959	31,275,158	11.13%
2000-2001	1,845,000	1,641,301	3,486,301	32,356,341	10.77%
1999-2000	1,670,000	1,724,111	3,394,111	30,562,644	11.11%

**RATIO OF DEBT SVC TO GENERAL FUND REVENUES & OTHER SOURCES**



SOURCE: SOLANCO SCHOOL DISTRICT FINANCIAL RECORDS